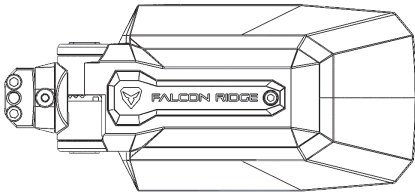


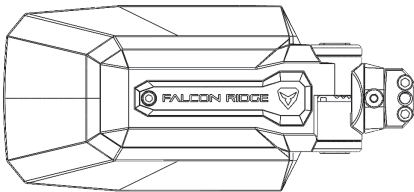
TRAILHEAD MIRROR -56-19029  
INSTALLATION MANUAL

PARTS LIST

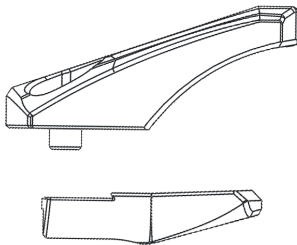
Driver side Mirror



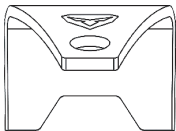
Passenger side Mirror



Pro-fit and Profiled  
clamp assembly (2)



Stainless steel  
hook (2)



m6 x 6mm  
button head bolts (2)



m6 x 25mm  
socket head bolts (4)



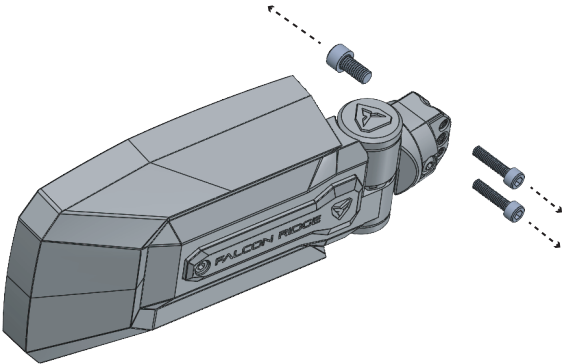
m8 x16mm  
socket head bolts (2)



m6 x12mm  
button head bolts (4)

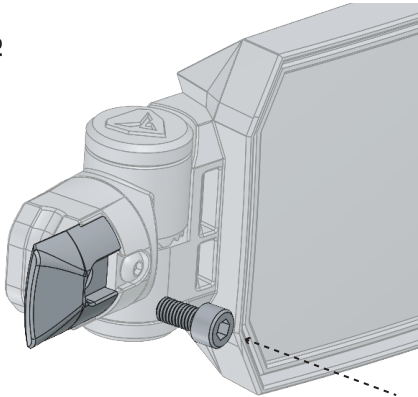


STEP 1



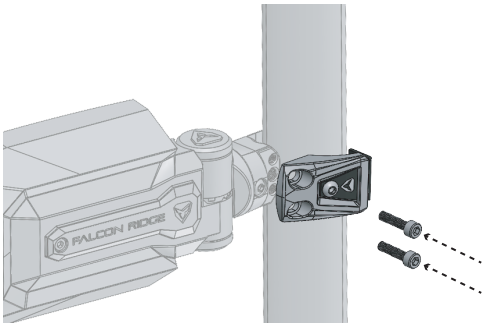
Disassemble 3 bolts by unscrewing.

STEP 2



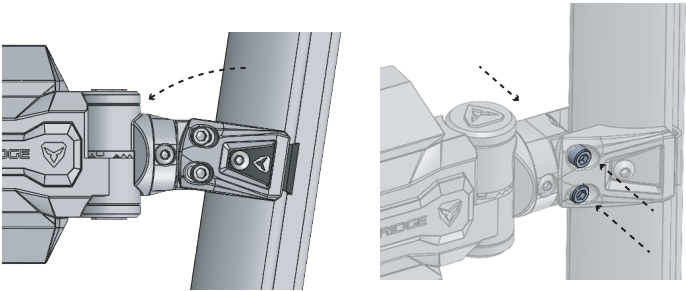
Assemble bottom half clamp using  
M8x16mm bolt.  
**TIGHTEN IT ALL THE WAY.**

STEP 3



Place both halves of the clamp  
around roll cage tube. Loosely  
assemble them by screwing m6  
x25mm bolts. **DO NOT TIGHTEN  
THEM ALL THE WAY YET.**

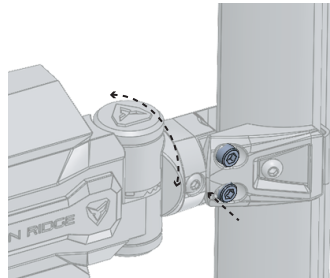
STEP 4



Rotate mirror on clamp so  
that it is level and provides  
desired viewing angle.

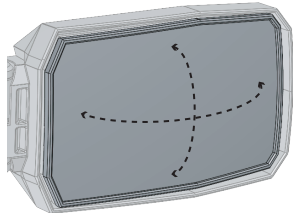
Tighten m6x25mm bolts to  
secure the clamp on the roll  
cage once adjustment is  
complete.

STEP 5



Loosen m6x12mm bolts to  
rotate mirror housing for  
desired angle. Retighten bolts  
once adjustment is complete.

STEP 6



Adjust mirror tray by  
pushing edges of the tray  
for final adjustment.